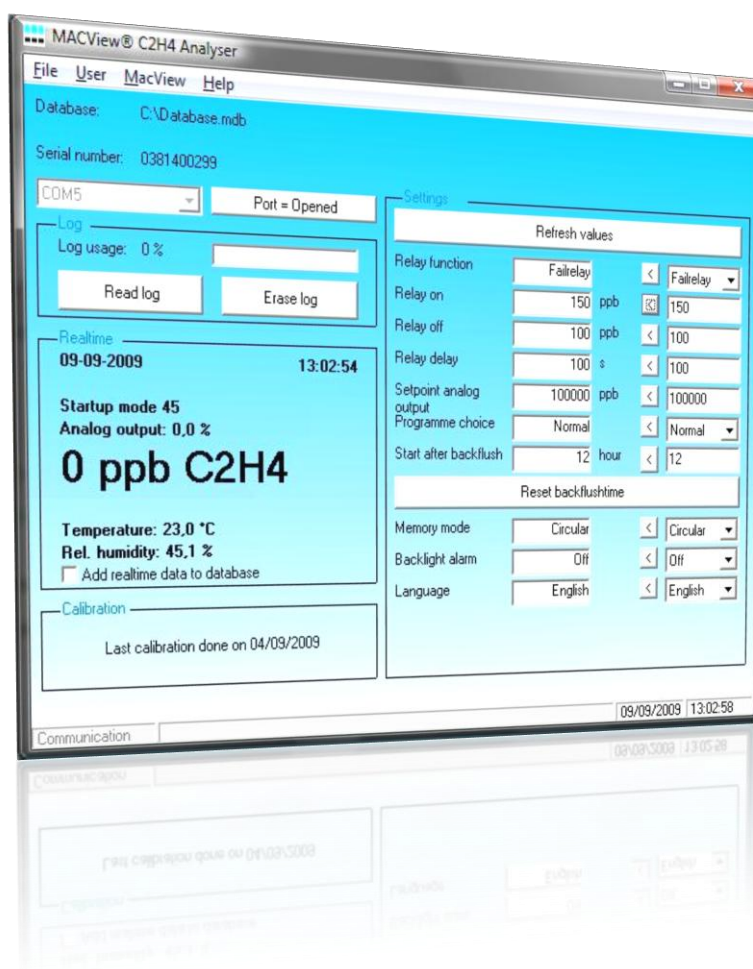


# MACView® Gas Analyser Software user manual



## Table of Contents

Getting started .....	3
Create a new database.....	3
Open an existing database .....	3
Communication with the MacView Gas Analyser .....	3
Opening and closing the COM port .....	3
Log usage .....	4
Real-time data .....	4
Calibration date .....	5
Settings .....	5
The menu bar .....	6
File – New database .....	6
File – Open database.....	6
File - Graphs overview.....	6
File - Overview TWA .....	7
File - Export to Excel .....	7
File - Export to CSV-file.....	8
File - Print.....	8
File - Exit .....	9
User – CNA data .....	9
User – Language .....	9
User – Tooltips on.....	9
MacView – Sync date & time .....	9
MacView – Restart system .....	9
MacView – Connection speed .....	9
MacView – Version numbers .....	10
MacView – Menu password .....	10
Help – MacView Gas Analyser .....	10
Help – MacView Software .....	10
Help – About.....	11

## Getting started

To start using the MacView Gas Analyser software you first have to open or create a database. The application uses this database to store the measured data.

### Create a new database

If you want to start with a new database you have to select 'New database' from the 'File' menu. You can choose a name and the location of the database in the dialog that opens.

### Open an existing database

If you want to view data from an existing database, or you want to add the new data to an existing database you must choose 'Open database' from the 'File' menu. After you have selected the database in the dialog that opens you will be able to view the data from this database and/or append new data to this database.

## Communication with the MacView Gas Analyser

After you have selected a database you are able to start the communication with the MacView Gas Analyser. Make sure that you have connected your MacView Gas Analyser to a serial port on your pc. This can also be done with an RS-232 to USB converter as shown below.



The MacView Gas Analyser software can only use COM ports in the range of COM1 to COM16. If you use a COM port with a higher number, no communication will be made with the analyser.

### Opening and closing the COM port

Select the COM port that is connected to the MacView Gas Analyser in the drop down box. To open the COM port and start the communication press 'Port = Closed' to open the COM port.



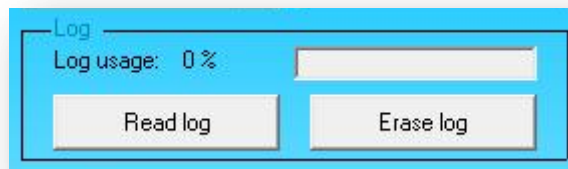
After you have pressed this button a progress bar will appear on the bottom of the screen. All the settings and measured values from the MacView Gas Analyser will be shown on screen. The text on the button will change from 'Port = Closed' to 'Port = Opened'.



To stop communication press 'Port = Opened' to close the COM port.

## Log usage

In the 'Log' section you can monitor the log of the MacView Gas Analyser. You can see if the log is full or not, and you can read the log (to the database) and erase the log.



The log consist of a set of records with a date and a time and a number of measured values. These records are created on an interval that is greater than the real-time data interval.

If you press 'Read log' new measurements will be added to the database. Previous data will not be removed from the database.

## Real-time data

The 'Realtime' sections gives you the same data as you can see on the display of your MacView Gas Analyser (if the analyser has a display). Additionally you can give the analyser the command to add real-time data to the database. In this case a record is added to the log every second.



## Calibration date

The 'Calibration' section tells you when the MacView Gas Analyser has been calibrated for the last time. The MacView Gas Analyser must be calibrated once every year.

## Settings

The 'Settings' section tells you the values of the settings in the MacView Gas Analyser. In this section you can also change the settings. Changing a setting can be done as follows:

1. Set the value in the right column of the 'Settings' section.
2. Press the '<' button in the middle (between the left and the right column). The settings is now send to the analyser. The value of the setting will be updated in the left column.

Refresh values			
Relay function	Failrelay	<	Failrelay ▼
Relay on	150 ppb	<	150
Relay off	100 ppb	<	100
Relay delay	100 s	<	100
Setpoint analog output	100000 ppb	<	100000
Programme choice	Normal	<	Normal ▼
Start after backflush	12 hour	<	12

Reset backflush time			
Memory mode	Circular	<	Circular ▼
Backlight alarm	Off	<	Off ▼
Language	English	<	English ▼

## The menu bar

### File – New database

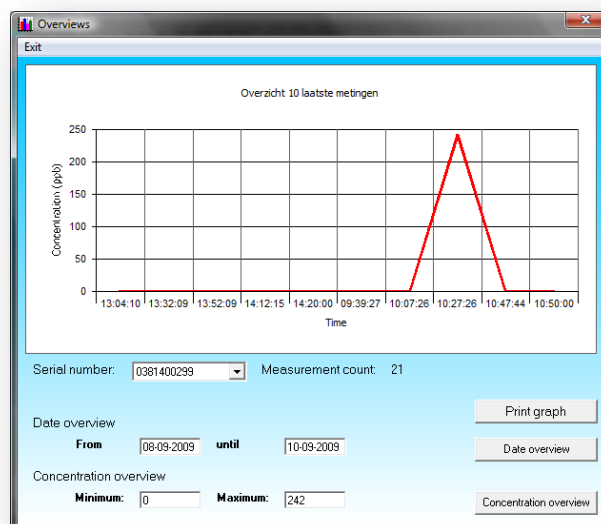
To create a new database you must use this menu item. A dialog will be shown with a default new database name. You can change the name and the location of the database. By clicking the 'Save' button you create this new database. This menu item is only active if there is no communication with the MacView Gas Analyser.

### File – Open database

To open an existing database you must use this menu item. A dialog will be shown. In this dialog you can navigate to the database that you want to use. This menu item is only active if there is no communication with the MacView Gas Analyser.

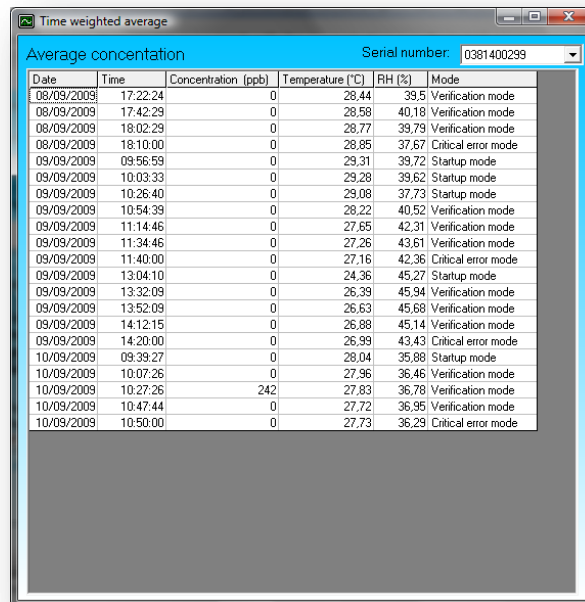
### File - Graphs overview

From this menu item you can see a graph with the concentration over the last 10 measurements. You can also change the selection in the selection boxes on the bottom of the form. You can choose between a date overview and a concentration overview.



## File - Overview TWA

In the Time Weight Average (TWA) overview you can see the database records in a tabular format, as shown below.



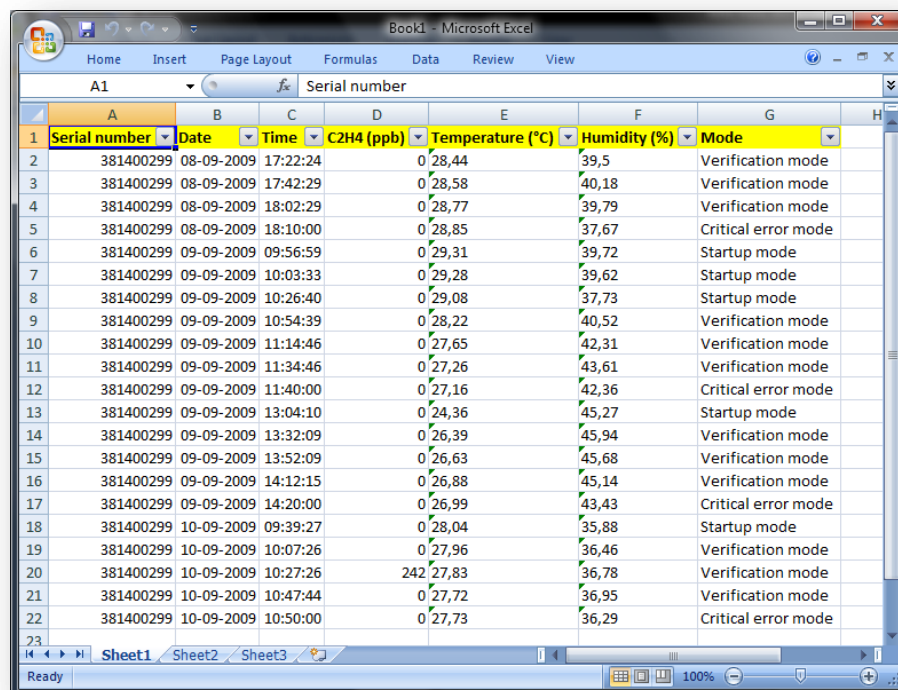
Time weighted average

Serial number: 0381400299

Date	Time	Concentration (ppb)	Temperature (°C)	RH (%)	Mode
08/09/2009	17:22:24	0	28,44	39,5	Verification mode
08/09/2009	17:42:29	0	28,58	40,18	Verification mode
08/09/2009	18:02:29	0	28,77	39,79	Verification mode
08/09/2009	18:10:00	0	28,85	37,67	Critical error mode
09/09/2009	09:56:59	0	29,31	39,72	Startup mode
09/09/2009	10:03:33	0	29,28	39,62	Startup mode
09/09/2009	10:26:40	0	29,08	37,73	Startup mode
09/09/2009	10:54:39	0	28,22	40,52	Verification mode
09/09/2009	11:14:46	0	27,65	42,31	Verification mode
09/09/2009	11:34:46	0	27,26	43,61	Verification mode
09/09/2009	11:40:00	0	27,16	42,36	Critical error mode
09/09/2009	13:04:10	0	24,36	45,27	Startup mode
09/09/2009	13:32:09	0	26,39	45,94	Verification mode
09/09/2009	13:52:09	0	26,63	45,68	Verification mode
09/09/2009	14:12:15	0	26,88	45,14	Verification mode
09/09/2009	14:20:00	0	26,99	43,43	Critical error mode
10/09/2009	09:39:27	0	28,04	35,88	Startup mode
10/09/2009	10:07:26	0	27,96	36,46	Verification mode
10/09/2009	10:27:26	242	27,83	36,78	Verification mode
10/09/2009	10:47:44	0	27,72	36,95	Verification mode
10/09/2009	10:50:00	0	27,73	36,29	Critical error mode

## File - Export to Excel

This menu item exports the data from the database to an Excel worksheet and opens this worksheet in Excel. To do this Microsoft Excel must be installed on the pc. This can be any version from Excel '97 and higher.

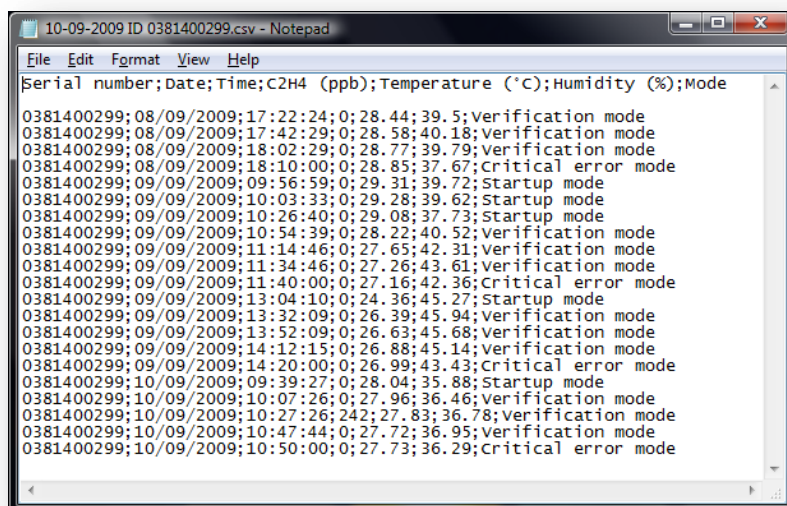


Book1 - Microsoft Excel

	A	B	C	D	E	F	G
1	Serial number	Date	Time	C2H4 (ppb)	Temperature (°C)	Humidity (%)	Mode
2	381400299	08-09-2009	17:22:24	0	28,44	39,5	Verification mode
3	381400299	08-09-2009	17:42:29	0	28,58	40,18	Verification mode
4	381400299	08-09-2009	18:02:29	0	28,77	39,79	Verification mode
5	381400299	08-09-2009	18:10:00	0	28,85	37,67	Critical error mode
6	381400299	09-09-2009	09:56:59	0	29,31	39,72	Startup mode
7	381400299	09-09-2009	10:03:33	0	29,28	39,62	Startup mode
8	381400299	09-09-2009	10:26:40	0	29,08	37,73	Startup mode
9	381400299	09-09-2009	10:54:39	0	28,22	40,52	Verification mode
10	381400299	09-09-2009	11:14:46	0	27,65	42,31	Verification mode
11	381400299	09-09-2009	11:34:46	0	27,26	43,61	Verification mode
12	381400299	09-09-2009	11:40:00	0	27,16	42,36	Critical error mode
13	381400299	09-09-2009	13:04:10	0	24,36	45,27	Startup mode
14	381400299	09-09-2009	13:32:09	0	26,39	45,94	Verification mode
15	381400299	09-09-2009	13:52:09	0	26,63	45,68	Verification mode
16	381400299	09-09-2009	14:12:15	0	26,88	45,14	Verification mode
17	381400299	09-09-2009	14:20:00	0	26,99	43,43	Critical error mode
18	381400299	10-09-2009	09:39:27	0	28,04	35,88	Startup mode
19	381400299	10-09-2009	10:07:26	0	27,96	36,46	Verification mode
20	381400299	10-09-2009	10:27:26	242	27,83	36,78	Verification mode
21	381400299	10-09-2009	10:47:44	0	27,72	36,95	Verification mode
22	381400299	10-09-2009	10:50:00	0	27,73	36,29	Critical error mode

## File - Export to CSV-file

After clicking this menu item a dialog is shown with a default name of the csv file. The name and the location can be changed in this dialog. After clicking the 'Save' button in this dialog the csv file is created. You can open this csv file with any text editor you prefer, or you can open this csv file with Excel.



## File - Print...

This menu item creates a report with the data from the database. Your address information (which can be shown with the menu item *User - CNA data*) is printed at the bottom of the report pages.

MACView Rapport

Zoom: 100%

Print date: 10/09/2009

**Table with measured concentrations c2h4**

Date	Time	Concentration c2h4 (ppb)	Temperature (°Celsius)	Humidity (%)	Mode
Serial number: 0381400299					
08/09/2009	17:22:24	0	28.44	39.5	Verification mode
08/09/2009	17:42:29	0	28.58	40.18	Verification mode
08/09/2009	18:02:29	0	28.77	39.79	Verification mode
08/09/2009	18:10:00	0	28.85	37.67	Critical error mode
09/09/2009	09:56:59	0	29.31	39.72	Startup mode
09/09/2009	10:03:33	0	29.28	39.62	Startup mode
09/09/2009	10:26:40	0	29.08	37.73	Startup mode
09/09/2009	10:54:39	0	28.22	40.52	Verification mode
09/09/2009	11:14:46	0	27.65	42.31	Verification mode
09/09/2009	11:34:46	0	27.26	43.61	Verification mode
09/09/2009	11:40:00	0	27.16	42.36	Critical error mode
09/09/2009	13:04:10	0	24.36	45.27	Startup mode
09/09/2009	13:32:09	0	26.39	45.94	Verification mode
09/09/2009	13:52:09	0	26.63	45.68	Verification mode
09/09/2009	14:12:15	0	26.88	45.14	Verification mode
09/09/2009	14:20:00	0	26.99	43.43	Critical error mode
10/09/2009	09:39:27	0	28.04	35.88	Startup mode
10/09/2009	10:07:26	0	27.96	36.46	Verification mode
10/09/2009	10:27:26	242	27.83	36.78	Verification mode
10/09/2009	10:47:44	0	27.72	36.95	Verification mode
10/09/2009	10:50:00	0	27.73	36.29	Critical error mode

Pages: 1



## File - Exit

This menu item closed the MacView Gas Analyser software application.

## User – CNA data

With this menu item you can edit your address information. This information will be printed on the bottom of the report from the *File – Print...* menu.

## User – Language

Here you can choose the language of the applications interface. You can also set the language to be the same as the language of the connected MacView Gas Analyser. You can choose between Dutch (Nederlands) and English.

## User – Tooltips on

By checking this option many of the items in the interface of the MacView Gas Analyser software get a tooltip with useful information about this item. For example, all the buttons on the main screen will show their function when you position your mouse pointer on top of the button (without pressing a mouse button). This also works with labels and text boxes etc.

## MacView – Sync date & time

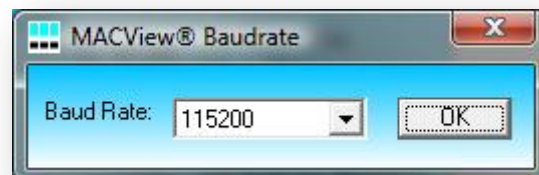
To synchronize the date and time from your pc with the MacView Gas Analyser you use this menu item. The progress bar at the bottom of the main screen will show the progress of the synchronization. After the date and time are synchronized the progress bar will disappear. This menu item is only active if there is communication with the MacView Gas Analyser.

## MacView – Restart system

If you want to reset the MacView Gas Analyser you can use this menu item. After clicking this item the MacView Gas Analyser will reset. It will take a couple of minutes before the MacView Gas Analyser software will show real time data again. This menu item is only active if there is communication with the MacView Gas Analyser.

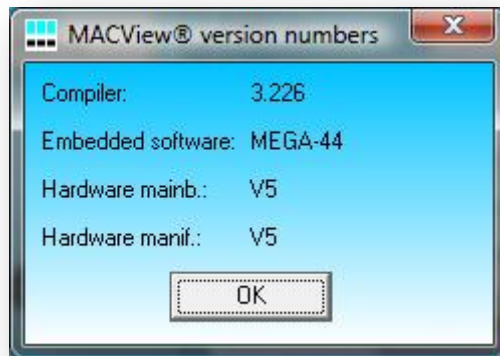
## MacView – Connection speed

To set the connection speed of the communication use this menu item. In the form that is shown you can choose the right baud rate. Only change the baud rate if you experience problems with the communication between the MacView Gas Analyser software and the MacView Gas Analyser! This menu item is only active if there is no communication with the MacView Gas Analyser.



## MacView – Version numbers

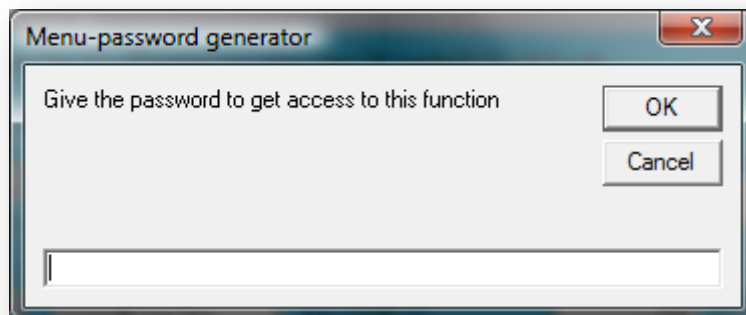
To view the version numbers of the software and the hardware of the connected MacView Gas Analyser use this menu item. A form with this information will be shown, as below.



This menu item is only active if there is communication with the MacView Gas Analyser.

## MacView – Menu password

This menu item can give you access to special menus in the MacView Alayser menu. To get this code you must type 'macview' when you are asked to fill in a password. After clicking the 'OK' button you see the password (code) to access the special menu items in the MacView Gas Analyser menus.



## Help – MacView Gas Analyser

This menu item opens a PDF file with information about the MacView Gas Analyser. To read this file you need a PDF reader.

## Help – MacView Software

This menu item opens a PDF file with information about the MacView Gas Analyser software (this document). To read this file you need a PDF reader.

## Help – About

This menu item gives you a form with program information, such as version and address information of the producer.

